

600S/660SJ

MID-SIZE TELESCOPIC BOOM LIFTS



- Rugged rough terrain telescopic boom lifts
- Powerful 4 wheel drive and oscillating axle
- Ultra-tight turning radius
- Simple to operate and easy to maintain
- Excellent working range and 6' jib for maximum versatility (660SJ Only)

 **snorkel**TM
www.snorkellifts.com

MID-SIZE TELESCOPIC BOOM LIFTS

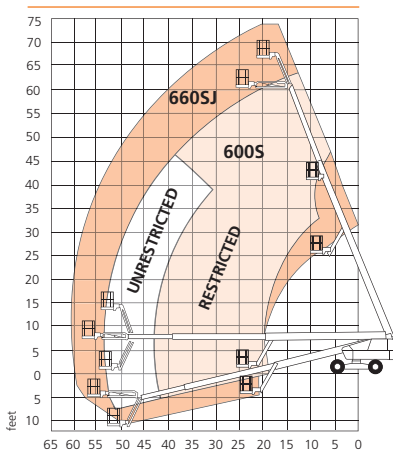
DIMENSIONS	600S	660SJ
Max. working height	66 ft	72 ft
Max. platform height (A)	60 ft	66 ft
Max. horizontal reach	52 ft 7 in	59 ft 1 in
Platform size	8 ft x 3 ft	8 ft x 3 ft
Transport width	7 ft 4 in	7 ft 4 in
Overall width (B)	8 ft 1 in	8 ft 1 in
Overall length (C)	30 ft 1 in	34 ft 2 in
Transport length	30 ft 1 in	28 ft
Stowed height (D)	8 ft 3 in	8 ft 3 in
Transport height	8 ft 3 in	10 ft 1 in
Ground clearance	13.5 in	13.5 in

PERFORMANCE		
Platform capacity (SWL) unrestricted	600 lbs	600 lbs
Platform capacity (SWL) restricted	1,000 lbs	n/a
Max. drive height	60 ft	66 ft
Max. wind speed	28 mph	28 mph
Max. drive speed (stowed)	3.5 mph	3.5 mph
Max. drive speed (elevated)	0.6 mph	0.6 mph
Jib length	n/a	6 ft 6 in
Jib working arc	n/a	135°
Platform rotation	150°	150°
Superstructure rotation (continuous)	360°	360°
Raise/lower time	50/50 sec	50/50 sec
Tailswing	47 in	47 in
Gradeability	45%	45%
Inside turning radius	10 ft 1 in	10 ft 1 in
Outside turning radius	17 ft 1 in	17 ft 1 in
Tires	355/55 D625 foam filled lug	
Controls	Proportional drive, raise, slew, extend, jib and platform rotate	
Drive system	4 wheel drive	

POWER		
Power source	Cummins 65hp (48.5kW) turbo diesel - Tier 4 Final	
Auxiliary power unit	12V DC	12V DC

WEIGHT		
Weight	24,640 lbs	27,300 lbs

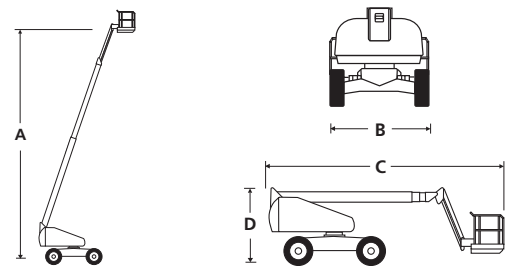
WORKING ENVELOPE



ANSI Specification
©Snorkel 2020

Specifications subject to change without notice. Photos and diagrams in this brochure are for promotional purposes only. Refer to appropriate Snorkel operators manual for detailed instructions on the proper use and maintenance.

600S/660SJ



STANDARD FEATURES

- Snorkel Guard™ secondary guarding system
- 6ft 6in 135° jib (660SJ only)
- Hydraulic platform rotation
- Oscillating axle (8" of oscillation)
- Four wheel drive
- Swing-out engine tray
- All proportional controls
- Power line to platform
- Tilt alarm & cut out
- Motion alarm
- Hour meter & on-board diagnostics display
- Horn
- DC emergency operation
- Tri-entry platform
- Flashing amber light
- 2 year parts & labor, 5 year structural warranty
- ANSI compliant

OPTIONS

- Special paint colors
- Airline to platform
- AC generator 110V/220V 2kW
- Non-marking tires
- Dual fuel
- Aircraft package
- Deluxe aircraft package
- Cold weather package
- Extreme cold weather package
- Extreme environment package
- Tow kit
- Glazier package
- Light package
- 10kW generator package
- 10kW generator/welder package
- Environmental hydraulic oil
- Pressure washer package
- Tool tray

snorkel

P.O. Box 1160
St. Joseph, MO 64502-1160, USA

Tel: 1 (785) 989-3000

Toll-free: 1 (800) 255-0317

Fax: 1 (785) 989-3070

Email: sales.usa@snorkellifts.com

www.snorkellifts.com

02/2020