

QUICK SPECS

Loader Arms	Vertical
Operating Weight	10,575 lbs
Rated Operating Capacity	3,600 lbs
Ground Pressure	4.5 psi
Engine Power	103.5 hp

Construction-Grade Reliability and Performance.

YANMAR's new TL100VS is a construction-grade compact track loader powered by a 103.5 hp Tier 4 Final YANMAR engine. Featuring YANMAR's renowned reliability, quality and performance, the TL100VS is ideal for improved productivity in construction work, rental applications, landscaping jobs and more.



TL100VS

**POWERFUL, EFFICIENT
103.5 HP TIER 4 FINAL
YANMAR DIESEL
ENGINE**

**DURABLE
RUBBER TRACK
UNDERCARRIAGE**

**LEADING VISIBILITY
FROM CAB**

**TORSION AXLE
SUSPENSION
FOR INCREASED
COMFORT AND LOAD
RETENTION**

**IMPROVED
PRODUCTIVITY AND
COMFORT FROM
OPTIONAL RIDE
CONTROL**

**COMFORTABLE
OPERATOR STATION**

**SMARTASSIST
TELEMATICS
OPTIONS FOR
CONVENIENCE**

INNOVATIVE FEATURES

SMARTASSIST Telematics

Improve convenience and operator safety with Yanmar SMARTASSIST Telematics. The system's features range from error detection and work reports to integrated theft protection. The TL100VS also includes Yanmar's new remote-control option available through factory or field installation.

Suspended Heavy Duty Undercarriage

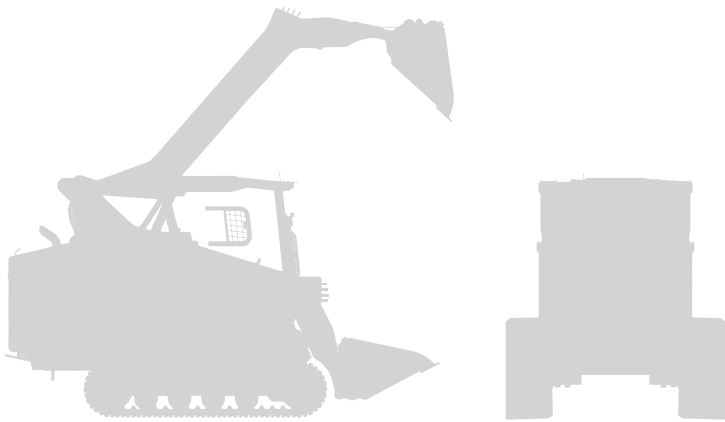
Achieve maximum reliability and durability with the TL100VS' steel-embedded undercarriage. Featuring standard torsion axle suspension to smooth out the ride, the undercarriage improves operator comfort and material retention.

Productivity-Boosting Technology

Get more done with less material loss with optional innovative material retention features. The TL100VS allows operators to preset the attachment angle and loader arm position for convenience during repetitive tasks. Dual Direction Self Leveling and Automatic Ride Control capabilities improve material retention while auto 2-speed switches the TL100VS between low and high speed modes for efficient operation.

TL100VS

Engine	
TYPE	Diesel 4-cylinder, Intercooled Turbo
MODEL	Yanmar 4TNV94FHT
GROSS POWER RATING	103.5 hp (77.2 kW)
DISPLACEMENT	3.1 L
TORQUE, PEAK	291 ft-lb (395 Nm)
COOLING SYSTEM	Belt-driven fan and anti-freeze filled radiator cooling system
INTAKE AIR CLEANER	Three-stage
EMISSION CONTROLS	Meets all U.S. EPA Tier 4 final standards
Undercarriage	
TRACK WIDTH	17.7 in. (450 mm)
LENGTH OF TRACK ON GROUND	66 in. (1,676 mm)
GROUND CONTACT AREA	2,336 in. ² (1.51 m ²)
DRIVE SYSTEM	Dual hydraulic drive motors
UNDERCARRIAGE SUSPENSION	Two independent torsion axles per undercarriage



© 2023 YANMAR Compact Equipment / OE-TL100VS-0323



For parts, please visit [YANMAR.com/us/products/parts/](https://www.yanmar.com/us/products/parts/) or call 800.966.7685.